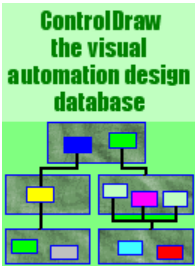
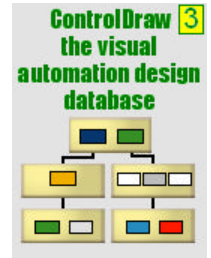


Announcement - ControlDraw 3



ControlDraw has been improved continuously since ControlDraw1 was first used in 1995. Then it was unique but hard to use and limited. ControlDraw underwent a huge update with the release of ControlDraw2 in 1999, and has progressed enormously since then. This has been greatly helped by working with the expert engineers who use the software. Now version 3 has been produced. There are many more changes than the splash screen.

We hope you approve.



Background

There were three primary reasons to develop version 3.

Graphics

Some things, like rotated text or lines breaking when they cross, were not feasible with the versions of components used in ControlDraw2. Well, the latest versions of some components provide these and many more attractive features. Investing time (and some money) in these components has been a large part of this major upgrade to ControlDraw.



Database

ControlDraw2 models are Access97. It was decided to make an overdue change to the database, by upgrading it to Access2000. You can read more about the upgrade to Access 2000 below
Dot.Net was considered but will have to wait till CD4

Future

The upgrade has opened the path for more many improvements in the future.

For details please contact ControlDraw Ltd

What's new in ControlDraw?

Visual Improvements

This is the most immediately obvious improvement, and includes many 'nice to have's'



Database improvements

The model is now an Access2000 model, and the database engine is Jet 4 rather than Jet 3.

Access Console

The model now includes an Access Console form with buttons for viewing various aspects of the data in the model. Open a model in Access to see.

Jet

The upgrade from Jet 3 to Jet 4 and the improved picture handling should improve multi-user performance.

Usability improvements

There are also a number of improvements to the general user interface.

Improvements to come

The new version promises future improvement, plans including :

SFC Draw integration

SFC Draw is highly improved version of the SFC functions in ControlDraw. At present SFC Draw is a stand-alone programme, but based on the CD2 right click to draw system.

Improved Matrices

Rotated headers for Cause and effects

About Upgrading

Status

ControlDraw Ltd has been using version 3 on internal work for some time, and carried out extensive testing including heavy simulated multi-user sessions across a network. But it needs more user testing. Hence the first release is called Beta.

Compatibility with CD2 models

You can use CD3 to edit CD2 models, but without the new graphics features such as rotated text , new arrows etc

Co-existence with CD2

ControlDraw 2 and ControlDraw 3 can co-exist and even be run at the same time. You cannot however copy in a CD2 session and then paste into a CD3 session. But there really is no need since CD3 can edit CD2 models
ControlDraw 3 uses separate registry settings so that the Recently used list window sizes etc are independent.

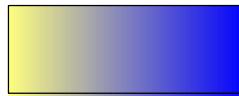
Details of Improvements

Object Graphics

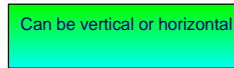
Text Rotation for Tagnames
Gradient colours - Blend two colours - after you select a fill colour an option appears to set a gradient colour. If selected, a new colour dialog appears and then you are asked Left-Right or Vertical. Depending on the answer the two colours are blended, top-to bottom or left-right.
New shadows – see example

ControlDraw 3 New Features

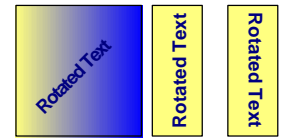
GradientColors



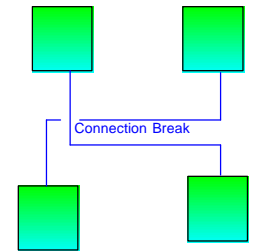
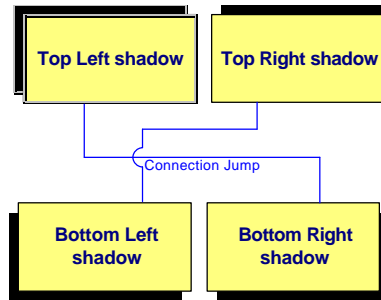
GradientColor is an option after selecting the first colour



Can be vertical or horizontal

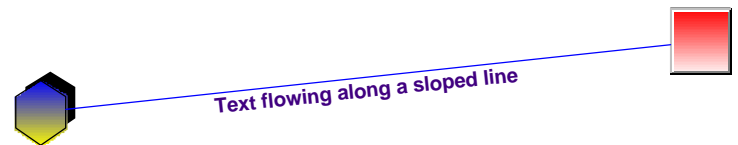


Text angle is set in the Text Justification popup



Connections

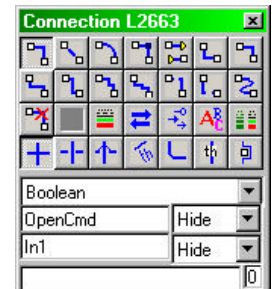
The connections toolbox has more buttons, to support the new features



Line breaks or arcs when lines cross

Text can now be aligned along connections using the last button on the connections toolbar.

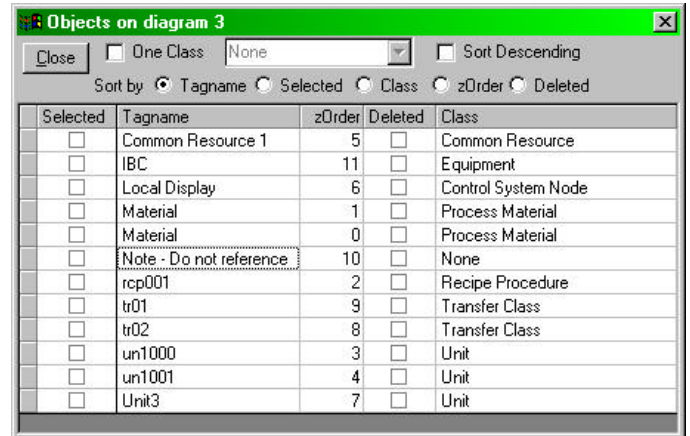
The segment of text at which the text appears can be selected by clicking the number next to the connection's caption text. 43 different **arrow styles** compared with 19 for CD2 models. Each connection may have an arrow at the start, the end or in mid sections. ControlDraw3 models also now provide 3 sizes for the arrows, small medium or large. CD2 arrows were always small. Note that some of the new style could be used to indicate slopes for lines on P&ID type diagrams. To support this the arrow selection form has been redesigned and improved.



Captions now up to 128 characters

List View right click menu

This shows the objects on a diagram in list form, where you can select/deselect, change tagnames, delete, undelete, and also change the front-back order of the symbols on the current diagram. Note - even if an object has been deleted and there were subsequent actions so that Undo would not undelete the object, the object can be recovered until the diagram is closed. zOrder is the front to back order. Highest numbers at the front.



Tagging and Numbering

It is now easier to find the causes of duplicate RealTag. The differences in the hierarchy of the objects instance are now prefixed with a *.

It is also now possible to set a special default value for instance fields.

Provided they are text you can put “!Left PTag #” in the Default value for the class instance field in data design and then when the instances are built, these fields will be set to the first # characters of the page tag. This is useful for example for IO list generation and is used in the sample models.

Improved Picture Handling

Moving the mouse over a picture when showing embedded pictures shows the first page and tagname that the picture is used in. Invalid pictures are now shown as a red cross. (these should not normally occur) In Tools Embedded pictures, Invalid pictures can be identified and deleted

Export Pictures to folder is now in Tools Embedded Pictures and also works better by adding the correct extension to file names.

Model Review, Orphaned pages

There is now a button to fix the problem by adding objects on page 1 linked to the orphaned pages. AutoSize Parallel Branch is a new setting in >Tools Utilities.

When set (Default) parallel branches widths are automatically sized to align with the steps above or below

More changes

Additional buttons on the Drawing Toolbar to show the class, object tags and RealTags.



Much improved on the page text editing

File Manager Repair function replaced by Compact and Repair.

File manager improved including showing the reference model name when a model is selected and more

Developers note

ControlDraw2 was made possible by investing money in components and a lot of time in understanding and deploying them.

ControlDraw is written in VB6, a language that is very good with Access databases. So it should not have been a big change to move the version of Access up, and so it seemed. The change was done it a day, Grep was very handy. All fine then. Not! Let me explain:

ControlDraw uses fields in Access tables to store the pictures for symbols. And CD stores these in Memo fields. It should have been OLE fields, but at the time there seemed little difference.

The change was made so that CD3 stores them in OLE fields.

Now, a primary objective has been to maintain compatibility with CD2 models so that you can use CD3 to edit CD2 models (but without the new graphics). This has been fully achieved.

But along the way a major 'feature difference' between the Jet 3 and 4 database engines was eventually found, it is not well documented.

Additionally, much effort has been spent on deploying the new version of Addflow, this is responsible for many of the improvements.